

Sullivan Ranch and Bar A Cattle present

GENETIC PROGRESS

Saturday, June 12
West, Texas

Sale VI

BRED COWS & HEIFERS - HERD SIRES
OPEN REPLACEMENTS - FROZEN EMBRYOS

24 Confirmed
Pregnancies!

Also Including
the Annual Sullivan
Supply South
Equipment
Auction!

*Proven Show Cattle Genetics
from Programs That Win!*

GENETIC PROGRESS SALE VI

Saturday, June 12, 2010 • 1:00 p.m. CDT

West Livestock Auction – West, Texas

Located just off I-35 between Hillsboro and Waco at Exit 351

Genetic Progress Partners:



Dan Sullivan

Hillsboro, TX 76645

254/582-7096 - 254/582-0814 - 254/707-0814

dsullivan@hillsboro.net (e-mail)

www.showsteers.com/dsullivan - www.sullivanranch.net



Dave and Becky Allan

Schulenburg, TX

979/561-7115, Dave's Mobile

979/562-2532, Home

www.baracattle.com



Absentee Bidding Available Via The World Wide Web!!!

Available to potential buyers with high-speed internet access. Log-in at www.liveauctions.tv to create your bidding account.

LiveAuctions.TV Sale Day Internet Bidding Contact:
Gary Holub, 830/221-5550

*Internet buyers are responsible for all updates and announcements.
Please consult the sale update sheet prior to the auction.*

Marketing Staff:

Sale Manager:



Craig M. Reiter & Associates

P.O. Box 85 - Elmore, Ohio 43416

419/862-0117, office - 419/350-9159, sale days

cmreiter@primetimeagrimarketing.com

www.primetimeagrimarketing.com

Auctioneer:

Col. Steve Bonham - Newcastle, Oklahoma

405/387-3236 or 405/823-2972

Livestock Press:

The Weekly Livestock Reporter

John Andras - 817/789-7352

The Oklahoma Cowman

Chisolm Kinder - 405/747-4683

Craig Talkington - 785/623-1789

Sale Day Phones:

254/707-0814 - Sullivan Ranch

419/350-9159 - Craig Reiter

979/561-7115 - Dave Allan

254/826-3725 - West Livestock Auction

*Please call as far ahead of the sale as possible to arrange
for absentee bidding and delivery of your purchases.*

Live phone bidding is available but not guaranteed.

Schedule of Events:

Friday, June 11

The entire sale offering will be available for
inspection at the sale site.

Saturday, June 12

1:00 p.m. CDT

The Genetic Progress Sale VI



The Proven Power Source!

*Selling 58 Fall-Bred Females,
24 Pregnant Recipients, 21 Bulls,
14 Fall Heifer Calves,
plus Frozen Embryos!*

Airports Include

Dallas/Ft. Worth, approx. 1 hour North
Waco, approx. 30 minutes South

Hillsboro, Texas Hotels

15 minutes north on I-35
Hampton Inn, 254/582-9100
Comfort Inn, 254/582-3333
Holiday Inn Express, 254/582-0220
Super 8 Motel, 254/580-0404

The Czech Inn in West – Exit 353

254/826-0900

*Bring Your
Semen Jug For Embryo
Pickup & Sale Day Discounts
On Our Herd Sires!*

Important Sale Information:

Terms: Terms of sale are cash or good check made payable immediately after the sale and before any cattle are loaded. Invoiced (absentee) accounts are payable in full within 10 days of the sale or are subject to a 2% finance charge on the tenth day. A fee of \$50 will be assessed to all returned checks. **Liability:** All animals and merchandise will be at the buyer's risk as soon as bid off but will be cared for by the seller(s) for a reasonable amount of time during and immediately following the sale. Neither the owners, auctioneers, sale manager or other affiliated personnel may be held responsible for any accidents that may occur. PrimeTIME AgriMarketing NETWORK, Inc. acts only as an agent between buyer and seller and may not be held responsible for any livestock or merchandise. It is to be clearly understood that PrimeTIME AgriMarketing NETWORK, Inc. and its representatives act only as a medium between buyer and seller, and may not be held liable, financially or otherwise, for any failure on the part of the same to fulfill any obligations set forth in this sale or for the truth of any warranties expressed or implied. Neither does PrimeTIME AgriMarketing NETWORK, Inc. assume any financial obligations to collect or enforce the collection of monies between buyer and seller. This catalog has been prepared by the sale manager from information provided by the seller(s) and is assumed accurate as presented to us. However, PrimeTIME AgriMarketing NETWORK, Inc. will in no way guarantee age, pedigree, or reproductive status of the animals selling. All exceptions taken and adjustments made are between buyer and seller. **Breeding Information:** Please see the footnotes regarding breeding information for each lot. All bred females will be examined for pregnancy by a qualified DVM prior to the sale and any changes to their breeding status will be made available sale day. Conception dates listed in this booklet are based on the results of said pregnancy examination and/or known breeding dates, and are intended as estimates of calving date only. **Health:** All animals will be accompanied by a health paper valid for interstate shipment. Buyers should make themselves aware of their respective state's health requirements prior to the sale. **Guarantee:** Those cattle described herein as "checked safe" or "safe" are guaranteed bred and do not carry further guarantee. No guarantee, expressed or implied, is made as to an animal's ability to produce transferable embryos or frozen semen. All claims on bred females must be made in writing within 60 days of the sale date. **Insurance:** Livestock insurance will be available at the clerk's desk through Great American Insurance. **Trucking:** If you require assistance in transporting your purchases please contact the sale manager. Every effort will be made to minimize costs to the buyer. **Announcements:** Any announcements made from the sale block by the owners, auctioneer, or sale manager takes precedence over any printed materials. **Flush & DNA Rights:** On the Sullivan Ranch animals in this sale Sullivan Ranch reserves the right to one embryo flush of no less than 8 embryos plus the right to obtain a DNA cell line for cloning purposes at the convenience of the buyer and the expense of the seller. **Sale Booklet Prepared by:** Craig M. Reiter, Sale Manager.

Recent Wins From DSUL & Bar A!



2009 Oklahoma Youth Expo Grand Champion Steer - Heat Wave x DSUL Rose 2602 - Shown by Ky Stierwalt



2010 Fort Worth Stock Show Champion Chi Female
Who Da Man x Miss Elizabeth 27K - Shown by Matt Hill



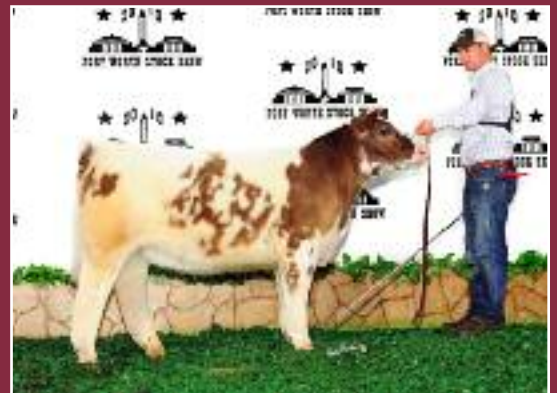
2010 Fort Worth Stock Show
Champion Chi Bull Calf Open Chi Show
DSUL Bently (George x Mariah 4220)



2010 Iowa Beef Expo
Champion Hereford Steer
Manhattan x Miss Summitt 145E
Shown by Montana Deppe



2010 Cal Poly Western Bonanza
Champion British Progress Steer
Reload x Summitt 145E
Shown by Brumley family



2010 Fort Worth Stock Show Class winner Chi show
DSUL Brie (George x Mariah 4220)



2010 SDSU Block & Bridle
Reserve Crossbred
Heat Wave x DSUL Chloe 4250
Shown by Joseph O'Sullivan

2010 Fort Worth Stock Show
Reserve Chi Bull Open Show
DSUL Manly Man (Who Da Man x 22 Keija
(Heat Seeker x 6651))



Congratulations to Our Hard-Working Customers!



2009 AGR Winter Preview
Firewater x Red Shasha L37
Champion Charolais heifer
Shown by Nick Hansen



2010 Houston Livestock Show
High-placing Charolais Steer by Smoke Signal
Shown by Cole Little



A 32-time Champion Steer in 2009-2010 including
Grand Champion Steer TAMU Saddle & Sirloin
and 4th Overall Belt Buckle Bonanza
Shown by Abby Christian



2010 Houston Livestock Show
Champion Hereford Steer
Shown by Tyler Allan



2010 San Antonio Stock Show
Reserve Champion Chi Heifer
Heat Wave x DSUL 491K
Shown by Kendra Elder



2010 Star of Texas Supreme Champion Heifer
Heat Wave x DSUL 503K
Shown by Kendra Elder

HERD SIRES

DSUL Tidal Wave



Heat Wave x Lexus 904 (Meyer 734 x Angus)
Homo Black - THC - BW: 95

Hoo Bear



A son of Hoo Too
THF/PHAF - Owned by Sullivan Ranch and Mid-Continent Farms

DSUL Smoke Signal



Full Flush x Calamity Jane 829
THF/PHAF - BW: 88

Thank you to all our recent semen and bull buyers!

*Bring your tank with you and get
stocked-up for 2010!*

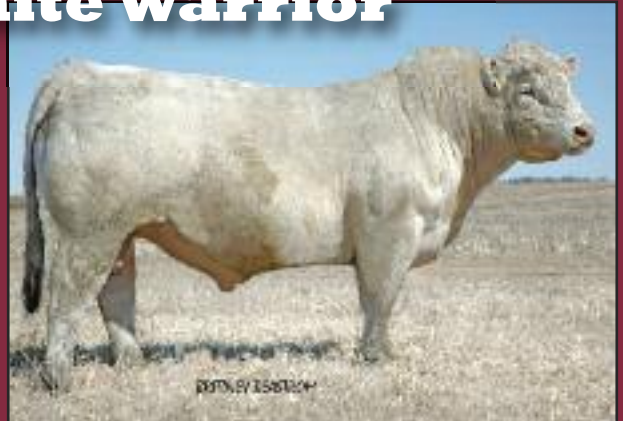
Sale Day &
Volume Discounts
Available On These
& Other Bulls!
Please call ahead for
special orders.

DSUL Upgrade 6651



Heat Seeker x SULL 6651 (Stockman 365 x MA) - THC - BW: 90
Progeny Sales Only

White Warrior



Polled, purebred Charolais by M6 Mark 7136
AICA#M659416

Mojito



Purebred Char by Hoo Doo Diamond 001

IT'S TIME FOR GENETIC PROGRESS!

Our Best Bulls for 2010!



DSUL Bently 941



DSUL Mariah 4220



DSUL Brie 9343



Mimms Donor 220

DSUL Bently 941 ET

Reg. Charolais Bull ERF704597 Calved: 5/06/09 Polled

HOODOO PRINCE 2019

KBC GEORGE 6019

HOODOO MS DIAMOND Z3040

HEAT SEEKER

DSUL MARIAH 4220

MIMMS DONOR 220 by POWER PLANT

BW 88

For Reference Only – Selling Semen Packages – Bently 941 will be on display sale day

Power genetics in a very powerful package, here is your only opportunity to access Bently 941 for 2010! This young bull has been turning plenty of heads and creating a lot of interest around the ranch this spring and we're very excited about the improvement potential that he brings to the table. He is the product of a great first flush from the rapidly up-and-coming DSUL Mariah 4220, a Heat Seeker daughter from the storied 220 Donor at Mimms Cattle, TX. Donor 220 is now deceased but not before she produced a long list of trendsetting cattle with Mariah 4220 herself being the pick of some the last embryos recovered from 220 in a group of calves produced at Sullivan Ranch that included a \$12,000 steer and a \$4,700 heifer from three calves born. We got the first embryo calves from Mariah 4220 last spring and the flush was as deep and exciting as anything we had. Aside from Bently 941 who was selected as the Calf Champion Chi Bull of the 2010 Ft. Worth Stock Show in his only time out, her first flush included DSUL Brie 9343 that was a many-time feeder calf champion in Nebraska and a class winner at Ft. Worth where her sister, DSUL Byrnie 9345, stood right behind her.

We plan to use Bently 941 heavily on all sorts of cows. His unique pedigree, deep lineage, and the impressive consistency of the flush that produced – along with his individual quality – him make an easy choice to help push our program higher. He is one of the best haired, widest, thickest Charolais-type bulls we have produced. See him for yourself sale day and bring your tank as this will be the only semen we sell from Bently 941 in 2010 or ever.

Semen Lot

100

Lot 100A – 10 straws x \$ _____

Lot 100F – 10 straws x \$ _____

Lot 100B – 10 straws x \$ _____

Lot 100G – 10 straws x \$ _____

Lot 100C – 10 straws x \$ _____

Lot 100H – 10 straws x \$ _____

Lot 100D – 10 straws x \$ _____

Lot 100J – 10 straws x \$ _____

Lot 100E – 10 straws x \$ _____

Lot 100K – 10 straws x \$ _____

These will be the only semen packages available from Bently 941 in 2010

BENTLY 941 IS OWNED BY SULLIVAN RANCH

TWO EXCITING SIRES FROM THE 6651 LINE!



Lot 1A



Lot 1A



DSUL Upgrade 6651

DSUL Manly Man 821

Reg. Chi Bull 340561 Calved: 3/14/08 Polled

WHO MADE WHO
ASHW WHO DA MAN
ASHW CA x MA x SM 55
HEAT SEEKER

DSUL KAEJA 21
6651 STOCKMAN

BW 98 Tested THF/PHAF

The Reserve Grand Champion Chi Bull of the 2010 Ft. Worth Stock Show, Manly Man 821 is another powerful and winning product of the great 6651 family. His full brother in-blood sells here and a full sister by the same mating was Isiah Bridwell's dominant show heifer from 2008-09 that won nearly every time out including Supreme Female of the 2009 Indiana State Fair and the Northern American International. His dam is a full sister to DSUL Upgrade 6651 plus too many major winners and difference-makers that we cannot list them here but rest assured that this is one of the most consistent pedigrees we can write. Like his accomplished siblings, Manly Man 821 offers striking style and leading thickness combined with great hair and bone. He is ready for heavy service and will add style to anything!

SULLIVAN RANCH

Lot
1A

DSUL My Man 22-2

Elig. Chi Bull Calved: Spring 2009 Polled

WHO MADE WHO
ASHW WHO DA MAN
ASHW CA x MA x SM 55
HEAT SEEKER

DSUL KENDALL 22
6651 STOCKMAN

BW 87

A full brother in-blood to the Lot 1A sire, here is another great product from the famed 6651 line. By the very limited and valuable Who Da Man, My Man 22-2 is another near genetic duplicate of Isiah Bridwell's dominant show heifer from 2008-09 that won nearly every time out including Supreme Female of the 2009 Indiana State Fair and the Northern American International. This pedigree is really working for us and this bull offers extra power with an awesome hip, great extension, and surprising depth and capacity. He has the physical and genetic power to help any program.

SULLIVAN RANCH

SEE LOT 207 FOR MORE FROM DONOR 22

Lot
1B



Lot 1B



Donor 6651



JSUL Dreams Come True

Our Proven Calving-Ease and Maternal Sire!

BEF Dr Sully

BULL Calved: Fall 2006 Scurred

Sire: THE WITCH DOCTOR

Dam: DSUL BARETA 4215 BY MEYER 734

Stout maternal power in a proven, easy-calving sire! Here is a great chance to add a powerful mature bull to your lineup and add some of our best genetics at the same time. Dr. Sully has done a great job for us and he knows his way around a ranch having worked for us in three states so far during his young life. He cleaned up the heifers for two of our past female sales and his daughters are just entering production this year. This bull sires style, body depth, and excellent leg placement along with a high percentage of baldy faces. He was bred by long-time customer Bellar Cattle, NE, from a Meyer 734 x Bareta 215 dam that was purchased in the 2006 Genetic Progress Sale and whose full brother sells as Lot 11 here. From calving-ease to maternal excellence to THF/PHAF genetics, Dr. Sully brings a lot to the table for any program!

SULLIVAN RANCH

Lot
2



Lot 2



Bareta 215



Lot 3



Miss Chill 602G

A Great Son of the 602 Line!

DSUL Easy Move 6602

BULL Calved: Spring 2009 Polled

Sire: NORTHERN IMPROVEMENT

Dam: DSUL MOVE OVER 6602 (Move Over x Miss Chill 602G)

BW 65

Produced from a leading first-calf heifer that is the last natural calf produced from the legendary Miss Chill 602G, this calving-ease and style specialist is a herd sire prospect to build around. He has muscle and body dimension that belies his ultra-low birth-weight; and his pedigree is a lock for consistent good looks and profitability. Buy with extreme confidence!

SULLIVAN RANCH

Lot
3



Lot 4



Dixie Erica 700G

The Last Son of Dixie Erica 700G!

DSUL Meyer 700-1

SIMANGUS BULL Calved: Spring 2009 Polled

Sire: MEYER 734

Dam: DIXIE ERICA 700G (OCC Doctor x F0203)

BW 78

From the embryo program and the now-deceased Dixie Erica 700G, this bull is a real brute! Like his famous dam that was a former top-seller in the Duff Power + Program, this bull is extremely deep ribbed and muscular with incredible fleshing ability. He is correct and balanced with a smooth shoulder and large testicles. Consider the pedigree – Meyer 734 x Doctor x F0203 – and think about how this bull will add a new dimension of power and quality to your program!

SULLIVAN RANCH

Lot
4



TOF Rascal 902W ET

Reg. Charolais Bull EM784434 Calved: 3/28/09 Polled
 HOODOO DIAMOND 001
MOJITO 701
 EC LEADING LADY 3003 P
 M6 GRID MAKER 104 PET
HVR MS SUPREME 413 ET
 MISS GCR SUPREME W13

Lot
5A

BW 98

One of two impressive full brothers by the Genetic Progress Sale featured sire, Bar A Majito, this exciting sire combines extra power, depth and thickness with total soundness and a long, smooth front end. The first crop from Mojito has quickly built a strong reputation for their sire - a \$5,000 heifer and a \$3,000 steer in the 2010 Sullivan and Bar A Calf Sale plus a \$4,750 heifer for High View Ranch, TX. Nix Farms, TX, sold two Mojito steers for \$3,000 and \$2,300 this spring - and this bull will certainly raise the bar even higher. Both of these bulls are the right size with extra muscle.

TWIN OAKS FARM - VINCE ELDER

TOF Mojo 905W ET

Reg. Charolais Bull EM784435 Calved: 4/21/09 Polled
 HOODOO DIAMOND 001
MOJITO 701
 EC LEADING LADY 3003 P
 M6 GRID MAKER 104 PET
HVR MS SUPREME 413 ET
 MISS GCR SUPREME W13

Lot
5B

BW 74

More power! This is another exceptional son of the 413 donor and the now-proven Mojito, and this bull is loaded with muscle from nose to tail. He is moderate framed like his full brother that sells here; both of these bulls will sire winning slick-shear steers and excellent females. Quite a pair of brothers!

TWIN OAKS FARM - VINCE ELDER



DSUL Limit Up 37-1

CHAROLAIS BULL Calved: Spring 2009 Horned
 Sire: **HOO DOO SLASHER**
 Dam: **OCR RED SASHA L37** (Red Sash x Miss Mac H02)

Lot
6A

BW 87

Two sons of one of the most-admired Charolais cows in the business, this purebred bull is powerful from every angle! If you need a Charolais bull to add bone, muscle, and rib to your calf crop then this is a great place to look. The L37 donor is just getting started for us but she is running fast with a purebred daughter by Firewater that has been winning all season for Nick Hansen in Nebraska, an excellent daughter in this sale, and more on the way.

SULLIVAN RANCH



DSUL Preferred Stock 37-2

CHAROLAIS BULL Calved: Spring 2009 Horned
 Sire: **HOO DOO SLASHER**
 Dam: **OCR RED SASHA L37** (Red Sash x Miss Mac H02)

Lot
6B

BW 85

More power from Red Sasha L37! This purebred bull is a thick, massive beast with stout performance and plenty of mass. His dam is really doing the job here and an investment here will be a wise move!

SULLIVAN RANCH

DSUL Edge 232-8

LIMOUSIN BULL Calved: Spring 2009 Polled
 Sire: **STRAIGHT EDGE**
 Dam: **DSUL SWEETNESS 232H** (First Choice x DSUL Too Sweet 23C)

Lot
7A

BW 88

Two sons of the National Western Grand Champion Limousin Female, DSUL Sweetness 232H! This purebred bull is predictably big, deep, rugged, and good. His pedigree runs four generations deep in DSUL genetics and you can bet he'll deliver style and muscle for years to come.

SULLIVAN RANCH

DSUL Top Edge 232-9

LIMOUSIN BULL Calved: Spring 2009 Polled
 Sire: **STRAIGHT EDGE**
 Dam: **DSUL SWEETNESS 232H** (First Choice x DSUL Too Sweet 23C)

Lot
7B

BW 87

More muscle and performance from the time-tested 23C line! Here is another polled, purebred option to add muscle and style from a family filled with winners for many years!

SULLIVAN RANCH



Two Sons of Zeke 407!

DSUL Meyer 407-1

SIMANGUS BULL Calved: Spring 2009 Polled

Sire: MEYER 734

Dam: ZEKE 407 (DJ Zeke x Power Plant)

BW 85

The first of two impressive sons of the tried-and-true Zeke 407 donor, this blaze-faced half-blood Simmental is smooth, big-topped and correct with an excellent disposition. He is a full brother to several bulls we have been using in our Nebraska heifer development operation with strong success as well as to the successful Sullivan Ranch donors, Alaina K02 and Popsicle 7407. Use both of these bulls for added maternal strength and consistency from a great line of cattle.

SULLIVAN RANCH

Lot
8A



Lot 8A



Alaina K02



Lot 8B

DSUL Meyer 407-2

SIMANGUS BULL Calved: Spring 2009 Polled

Sire: MEYER 734

Dam: ZEKE 407 (DJ Zeke x Power Plant)

BW 84

A heavy, powerful full brother to Lot 8A, this bull is massive and very good from every angle. He is another full brother to our leading, young donors Alaina K02 and Popsicle 7407 whose first calves have been among our top-sellers including a \$12,000 steer in our 2006 spring crop. This Sim x Maine bull will add rib and muscle to everything!

SULLIVAN RANCH

Lot
8B

Two Sons of XL Player 703F!

DSUL Meyer 703-1

SIMANGUS BULL Calved: Spring 2009 Scurred

Sire: MEYER 734

Dam: XL PLAYER 703F (Fullback x 6807)

BW 77

The first of two maternal specialists from the great 703F donor and Meyer 734, this bull offers some intriguing pieces for improvement. He is more moderate with a great neck, strong bone, and excellent feet and leg placement. Three full brothers have done us well in our Nebraska heifer development program and this bull will do them one better!

SULLIVAN RANCH

Lot
9A



Lot 9A



XL Player 703F



Lot 9B

DSUL Meyer 703-2

SIMANGUS BULL Calved: Spring 2009 Polled

Sire: MEYER 734

Dam: XL PLAYER 703F (Fullback x 6807)

BW 78

Another maternal specialist from the XL Player 703F donor that was a powerful Fullback x 6807 combination. This bull has been a high-performer all along and he offers extra performance on a powerful, correct skeleton and a pedigree filled with the cattle we like. He is polled and packed with muscle and good looks.

SULLIVAN RANCH

Lot
9B

HERD SIRES FROM POWERFUL DONOR DAMS!



DSUL Top Gun 48-1

SIMANGUS BULL Calved: Spring 2009 Scurred

Sire: MEYER 734
 Dam: DSUL MISS 48G (Chi x An x HF)

BW 72

Power and style from the well-proven DSUL Beth 48G, the dam of more than 20 progeny by Meyer 734 now working across the country. This goggle-eyed baldy has the look of a powerful herd sire and he is backed by one powerful female that seems to always generate something special with Meyer 734. His full sister is a featured donor in this offering – she sells as Lot 15 - and this bull has her good looks with extra muscle and a very correct, eye-catching design. You can build around this one!

SULLIVAN RANCH

Lot
10



DSUL Meyer 215

SIMANGUS BULL Calved: Spring 2009 Polled

Sire: MEYER 734
 Dam: BARETA 215 BY MOONSHINE

BW 79

A full sister to the dam of Dr. Sully as well as a long list of past sale favorites, this blaze-faced bull is one to add for some Sim-influenced style! Like his popular brothers and sisters, this bull offers excellent design and plenty of muscle. He is clean and correct and a product of one of the most consistent embryo matings we have produced. His now-deceased dam was one of our best with Meyer 734, and there may not be any more of these.

SULLIVAN RANCH

Lot
11



DSUL Clint 007

CHIMAÏNE BULL Calved: Spring 2009 Polled

Sire: WHO MADE WHO
 Dam: DSUL 007 (SM x AN)

BW 80

A full brother to the widely-admired RF Donor 500C, a former \$74,000 top-seller for Ray Farms, IL, this is one of the only ET products we got from the 007 donor. This bull offers some exciting options for club calf producers due to his choke neck, excellent muscle, and clean design. He is stouter than you might expect and he had excellent hair as a calf. We think we'll be hearing from this one!

SULLIVAN RANCH

Lot
12



Two Sons of Right Time 6005!

DSUL Gunner 6005-2

BULL Calved: Spring 2009 Polled

Sire: **FOREPLAY**
 Dam: **RIGHT TIME 6005** (Angus by Leachman Right Time)

BW 70

Old-fashioned genetics with time-tested goodness! We flushed the great Right Time 6005 donor to Foreplay to remake a foundation of success and it worked with this pair of brothers. This bull offers an easy-to-use outcross pedigree with a dazzling front end, plenty of muscle, and a low birth weight pedigree.

SULLIVAN RANCH

14A



Right Time 6005

DSUL Foreplay 6005-3

BULL Calved: Spring 2009 Polled

Sire: **FOREPLAY**
 Dam: **RIGHT TIME 6005** (Angus by Leachman Right Time)

BW 73

More old school success from Foreplay and the great Right Time 6005 that produced a number of winning Angus and crossbred progeny. This bull is smooth and solid with excellent structure and style. He should make a calving-ease and female sire to brag about and his daughters will be unrelated to nearly any club calf sire you can find!

SULLIVAN RANCH

Lot

14B



Lot 14B

THE COMPETITION IS MOUNTING...

It's Time for Genetic Progress!

Welcome to Our Sixth Sale!

When it comes to Genetic Progress, we've got you covered again this year with a great offering built around the most proven females in the Sullivan Ranch and Bar A herds. Our sixth offering will provide you with a great selection of some of both our "time-tested" and "fresh" genetics. From bulls to bred females to a great selection of confirmed pregnancies and embryos, this offering is a great slice of proven stock ready to go to work for you. They are proven in the Lone Star, and we can't wait for you to see them!

Different from most of our past years, we're digging deep to bring you an excellent selection of mature cows ready to deliver profit in the form of show calves this fall. We still have a few special bred heifers to offer this year but our 2010 offering is more focused on our mature, producing females including many past donors. These females have produced a very large portion of the calves in the past Sullivan and Bar Calf Sales that averaged \$4,400 on just over 100 head this March and has produced as many champion calves in Texas as any other annual sale. Note that many of these females are bred to produce full siblings to their best calves and that we have tried to provide a variety of calving dates to fit the ever-changing Texas show schedule. Dan and Dave will be sorry to see many of these females leave; they've been very good to them.

Thank you for your support of the Genetic Progress Sale over the previous five years. We look forward to answering any questions you might have prior to the auction and to seeing you on the seats in West. Remember that we'll have trucks headed in every direction and tanks ready to ship embryos and semen, just let us know how we can help you in your quest for Genetic Progress!

**See You in West,
 Craig Reiter
 Auction Manager
 419.862.0117 – office
 419.350.9159 – sale days
 primetime@primetimeagrimarketing.com**





Lot 15

DSUL Lit Beth 648

FEMALE Calved: Spring 2006

Sire: MEYER 734

Dam: DSUL MISS 48G (Chi x An x HF)

AI 11/21 to Monopoly – PE 11/25-1/30 to Hoo Bear – Safe to Monopoly – Due approx. 8/30

An ET product of one of the most consistent pedigrees we have worked, here is a proven donor from the heart of our program. Lit Beth 648 is selling before her first ET calves arrive and we might regret it because this young female is loaded with all the tools she needs and her pedigree is known to work for us and our customers. Safe to Monopoly for another sure thing, this big-bodied, sweet-looking delight has been flushed twice for a 10 egg average and we have many on the way next fall. Her first natural calf sells here along with a daughter of a full sister that has been an excellent donor for Sullivan Cattle, IA.

Lot
15



DSUL Miss 48G

Lot 15A – Embryos of DSUL Lit Beth 648

Three embryos by Heat Wave

SULLIVAN RANCH



Lot 16

DSUL Katerri 8648

FEMALE Calved: Spring 2008

Sire: MAINE X ANGUS

Dam: DSUL LIT BETH 648 (Meyer 734 x Miss 48G)

AI 11/28 to Ali 2 – PE 12/09-1/15 to Dr. Sully – Safe to Ali 2 – Due approx. 9/06

The first calf from the exciting Sullivan Ranch donor Lit Beth 648 that is featured here, this white-socked blaze is as stout and thick as any young female can be and she is loaded with proven genetics. She gets her good looks honestly from her young donor dam that will stand out wherever she lands.

SULLIVAN RANCH

Lot
16



Lot 17

Beth's Baby 354

FEMALE Calved: Spring 2003

Sire: HEAT WAVE

Dam: DSUL BETH 354 (Meyer 734 x Miss 48G)

AI 11/21 to Grey Goose – PE 11/25-1/30 to Hoo Bear – Safe to Grey Goose – Due approx. 8/30

Raised by Sullivan Cattle, IA, from one of the first daughters of Meyer 734 and Miss 48G, this Heat Wave female was purchased as a young heifer and she has been an excellent investment. She milks like her mother whose great-looking full sister sells here as Lot 15, and this cow can really deliver muscle, style, and hair. She gave us a \$3,600 heifer by Hoo Too along with a \$3,800 steer prospect and we love this mating to Grey Goose. This is one stout-hipped, long haired, extra-stout blaze from a great line of cattle!

SULLIVAN RANCH

Lot
17



Lot
18



DSUL Maria Vision 428

FEMALE Calved: Fall 2004
 Sire: **DOUBLE VISION**
 Dam: **DSUL MARIA 28D** (LM x AN)
AI 11/22 to SULL Eldorado – PE 11/25-1/30 to Hoo Bear – Safe to SULL Eldorado – Due approx. 8/29
 From the great Sullivan Ranch foundation donor, Maria 28D, here is a powerful female bred-up from our best female lines. A true one-of-a-kind, this is the only Double Vision daughter we have in production and she has been excellent. Her first calf was a \$5,500 daughter by All About Who that has developed into an excellent performer and this young cow also gave us an excellent, red Heat Wave steer. The Maria 28D daughters are proven to make excellent property and this one will knock you over with her correct, wide structure, outstanding udder quality, and total completeness. Safe to the National Champion, SULL Eldorado, this is a sure thing!
 SULLIVAN RANCH



Lot
19

Bar A 617

FEMALE Calved: Fall 2006
 Sire: **HOO TOO**
 Dam: **BAR A 17T** (Meyer 734 x Angus)
PE 12/20-2/24 to Splurge – Due early October
 One of the two daughters of the great 17T cow at Bar A, this young female is a special treat for 2010! She is off to a great start with her first calf – by Taz - selling for \$2,000 and an excellent replacement heifer to her credit. This grey-baldy is thick, deep, sound and very well balanced. Her great 734 dam has never missed – an excellent maternal sister sells here also – and Splurge (Heat Wave x Who Made Who) will work well here. Load this one!
 BAR A CATTLE

DSUL Bridget A280

FEMALE Calved: Fall 2002
 Sire: **BRANGUS**
 Dam: **ANGUS**
PE 11/25-1/30 to Hoo Bear – Due approx. 9/13
 Sullivan Ranch donor power! Here is our proven Brangus donor selling in her entirety with a valuable calf on the way! Bridget A280 is the dam of Amy Stoermer's 2009 San Angelo Stock Show Reserve Champion American Steer by DSUL Smoke Signal. This cow is extra deep ribbed and very correct with the stout, good build and breed character you need to work for the ABC divisions. She has been flushed twice for an average of 6.5 good embryos and her Hoo Bear calf will likely pay for her this fall!
 SULLIVAN RANCH

Lot
20

2009 Angelo Stock Show Reserve Champion American Steer



NTC 0888 Witch Doctor

Reg. Maine Anjou Cow 315657 Calved: 4/22/00 Scurred
 POWER PLANT
THE WITCH DOCTOR
 LLND ASHLEY
 ANGUS
UNREGISTERED DAM
 ANGUS
PE 12/15-2/24 to DSUL Up Grade – Safe – Due approx. late October
 Here is an excellent registered half-blood Maine by the all-time club calf maternal giant, The Witch Doctor. This cow has been rock-solid over the years with a string of calves in past sales including a son by Java that sold for \$4,400. She offers a proper frame score with outstanding thickness and a long front end.
 SULLIVAN RANCH

Lot
21



Proven Donors & Bred Females



DSUL Bk Max 142L

Reg. Simmental Cow 2156527 Calved: 3/20/01 Polled

PERFORMER
BLACK MAX
 MISS NICK 175L
 OCC ANCHOR
OCC BLACKBIRD 942C
 ANGUS

Lot
22

PE 12/15-2/24 to DSUL Up Grade – Safe – Due approx. late September

A rare find from the depths of the Sullivan Ranch embryo program, this unique female is a direct daughter of the foundation Simmental sire, Black Max, and the greatest OCC Anchor daughter in the business, Blackbird 942C. She is a big-backed, huge-ribbed cow with tremendous all-around quality and versatility. These are power genetics that breed true as this cow has been exceptional. A daughter, DSUL Max Factor by Chill Factor, was a \$10,000 selection by McCollum Cattle, TX, from our 2006 Genetic Progress Sale; and a son by Ammo was very successful for Clayton Major, TX, in 2007. Dan swore he would never sell this one!

SULLIVAN RANCH



DSUL Max Factor



Ammo x Lot 22



DSUL Meyer 072K

Reg. Simmental Cow 2089595 Calved: 4/08/00 Horned

MR BLACK GX 6W
MEYER RANCH 734
 MISS GX 728R
 ANGUS

Lot
23

72
 ANGUS

AI 12/13 to Naughty Pine – PE 12/15-2/24 to DSUL Up Grade – Safe to Naughty Pine – Due approx. 9/23

Another exceptional, registered half-blood Simmental daughter of Meyer 734, this cow has been as good as she looks over the years. She is 10 going on 6 with her tremendous depth and thickness and long, smooth front end. She has plenty left to give and has placed four calves in our past Sullivan and Bar A Show Calf Sales with a strong average of \$3,100 on one steer and three heifers with two of her daughters by Strictly Business and Who Da Man winning multiple jackpots for Freeman James, TX. This great cow will be worth all she brings and more!

SULLIVAN RANCH



Lady Meyer 973J

Reg. Simmental Cow 2050964 Calved: 9/01/99

MR BLACK GX 6W
MEYER RANCH 734
 MISS GX 728R

Lot
24

173

AI 11/21 to Monopoly – PE 11/25-1/30 to Hoo Bear – Safe to Monopoly – Due approx. 8/28

A great cow and one that will certainly create success in her new home! This donor-quality Meyer 734 daughter is another registered half-blood Simmental but she stands out from the rest due to her uncommon good looks, extra bone, and leading power. Her 2006 son sold for \$4,600 and another son by Heat Wave brought \$5,200 in 2008. She looks as good as ever and will certainly work with this mating to Monopoly. Tie on here!

SULLIVAN RANCH

DSUL Meyer 12L

Reg. Simmental Cow 2143477 Calved: 3/07/01 Polled
 MR BLACK GX 6W
MEYER RANCH 734
 MISS GX 728R
 ANGUS
BOYSEL 2019
 ANGUS

AI 12/20 to Jimmy the Greek – PE 12/22-2/24 to DSUL Up Grade – Safe to Jimmy the Greek – Due approx. 9/28

The famous "Holiday Classic Cover Girl" from the embryo program at Boyssel Genetics, OH, this cow is something special! She has been a favorite over the years with past successes like three daughters that average \$3,500 – including one this spring - and a son by Monsoon that brought \$3,000. This mating to Jimmy will show off her abilities though they are easy to see once you get a look at her. She is the right kind and has been for quite some time!

SULLIVAN RANCH

Lot
25



DSUL Meyer 11L

Reg. Simmental Cow 2143475 Calved: 3/18/01 Polled
 MR BLACK GX 6W
MEYER RANCH 734
 MISS GX 728R
 ANGUS
BOYSEL 330
 ANGUS

AI 12/20 to No Apologies – PE 12/22-2/24 to DSUL Up Grade – Safe to No Apologies – Due approx. 9/28

A full sister to the famous Meyer 330 donor at Went Blacks, NE, and Pryor Show Cattle, IA, this cow is a top selection from the Boyssel Genetics, OH, program and a former feature of the Holiday Classic Sale. She is the cowman's kind with excellent fleshing ability and plenty of muscle and udder quality. She knows how to do her job well with a \$4,500 daughter by Hoo Too and a \$4,250 steer to her credit plus a son that was second in the Angus division at Houston and Reserve Champion Angus at the Belt Buckle Bonanza, as well an excellent replacement heifer in our herd. She is safe to No Apologies, the \$27,000 son of Tank owned by Hale Cattle, TX.

SULLIVAN RANCH

Lot
26

DSUL Meyer 930J

Reg. 50% Simmental Cow 2060459 Calved: 2/28/99 Polled
 MR BLACK GX 6W
MEYER RANCH 734
 MISS GX 728R
 ANGUS
K- COW 30
 ANGUS

AI 11/22 to Grey Goose – PE 11/25-1/30 to Hoo Bear – Safe to Grey Goose – Due approx. 8/29

A fantastic performer and a great selection from K-Bar Ranch, this cow is hard to beat in terms of consistency. A daughter by Full Flush was Reserve Champion Chi Female of the 2005 San Antonio Livestock Show and each of our calf sales has featured a stout calf from this cow including another daughter by Full Flush at \$3,500 and a son by Johnny Walker Red at \$2,000. Load her on your trailer. You'll never regret it.

SULLIVAN RANCH

Lot
27



2005 San Antonio Reserve
Champion Chi Heifer



Bar A 250

FEMALE Calved: Spring 2002
 Sire: **MEYER 734**
 Dam: **PARTISOVER DONOR 550** (Angus)

AI 12/20 to Heat Wave 5 – PE 12/26-2/24 to DSUL Upgrade – Safe to Heat Wave 5 – Due approx. 9/28

Here is an extra-deep and versatile, star-faced Meyer 734 daughter from the well-proven 550 Angus donor at Partisover Ranch, GA. With many full sisters leading programs across the country, this family of cattle is one to rely on for consistent style and success. This cow is big and sound with an excellent udder and she has a Heat Wave on the way!

BAR A CATTLE

Lot
28



Meyer 58

FEMALE Calved: Spring 2005

Sire: MEYER 734
Dam: ROSANKY 58 (MA x AN)

AI 11/21 to Grey Goose – PE 11/25-1/30 to Hoo Bear – Safe to Grey Goose – Due approx. 8/28

The dam of four calves that have sold for a \$3,200 average, this direct 734 daughter is super solid and profitable. She is more moderate and easier fleshing than many and she has an excellent udder. Expect a silver baldy by Grey Goose, the \$35,000 Friction son from the full sister to Silver Bullet!

SULLIVAN RANCH

Lot
29

Miss FR J978

Reg. 50% Simmental Cow 2036301 Calved: 4/12/99 Polled

LRS PREFERRED STOCK 370C
RAINS LIMIT UP
RAINS BLACK BLACKIE 242B
XL DAKOTA PRIDE

F697
B-297

PE 11/25-1/30 to Hoo Bear – Due approx. 9/01

Another proven female and a real cash cow, this extra-stout, blaze-faced female was a top-selling open heifer at Christensen's 3C Ranch as a youngster. Her first calf in Texas was a very impressive, red Ladies Man daughter that went on to be very competitive throughout Texas and her string of excellent bull calves includes a 2005 steer by Ammo that sold for \$2,600, another by Who Da Man that brought in \$6,600, and one by Q-Dog that sold for \$2,000. She is bred for another stout one by Hoo Bear and don't bet it won't help her average of \$4,050 per calf.

SULLIVAN RANCH

Lot
30



Lot 30



Who Da Man x Lot 30



Collins McCarney 270

FEMALE Calved: Spring 2002

Sire: MCCARNEY (Meyer 734 x Power Plant)
Dam: COLLINS 853 (Angus)

AI 12/20 to Heat Wave 5 – PE 12/22-2/24 to DSUL Up Grade – Safe to Heat Wave 5 – Due approx. 9/28

A top selection from the Exposure Sale, this star-faced beauty is easy on the eyes and very productive. Check the large feet, great hip, and large rib cage blended with plenty of muscle. Heat Wave has worked with her before – a \$3,200 steer in 2009 - and we'll bet on her again!

SULLIVAN RANCH

Lot
31

Bar A 8125

FEMALE Calved: Spring 2006

Sire: PB LIMOUSIN
Dam: PB LIMOUSIN

PE 12/10-2/24 to DSUL Upgrade – Due late September

A nice, young purebred Limousin female from Express Ranches, OK, this cow is moderate and correct with a sweet front end. She is the kind that will work with Upgrade.

BAR A CATTLE

Lot
32

DSUL Lard Ass 236

FEMALE Calved: Spring 2002

Sire: LARD ASS
Dam: MA X AN

PE to Splurge 12/2- 2/24 – Safe - Due approx. Nov 8

We missed this cow at photo time but you need to be sure to see her. Lard Ass daughters are outstanding producers and this cow is monster-boned and super easy-doing with a cool look. She'll work for ABC or exotic production and has produced hits like a \$4,000 steer in 2006 to Bonham Show Cattle plus a \$2,100 steer by Tidal Wave last year.

SULLIVAN RANCH

Lot
33

Proven Donors & Bred Females

Bar A 504

FEMALE Calved: Fall 2005

Sire: **BLACK RHINO**
Dam: **MA X AN**

AI 12/21 to Troubadour – PE 12/26-2/24 to DSUL Upgrade – Safe to Troubadour – Due approx. 9/29

This should really work! Troubadour should really match up nicely with this Rhino daughter that is moderate-framed, very big boned and thick and really square hipped.

BAR A CATTLE

Lot
34



Lot 34



Lot 35

Bar A 301

FEMALE Calved: Spring 2003

Sire: **LAST CHANCE** (Shorthorn)
Dam: **BLIZZARD** (Charolais)

PE 12/10-2/24 to DSUL Upgrade – Due late September

Super stout and cool-looking with a track record for strong performance, this tan-roan female is one to mark with a star. She offers extra flexibility with her unique pedigree – Shorthorn-sired with a Charolais bottom-side – and she milks very well. Her first calf at Bar A was an awesome Heat Seeker heifer and she is bred to the proven Heat Seeker son, Upgrade!

BAR A CATTLE

Lot
35

Bar A 42

FEMALE Calved: Spring 2003

Sire: **ANGUS**
Dam: **SM X AN**

PE 12/10-2/24 to DSUL Upgrade – Due early October

Extra stout and productive, this cow has a nice one every year and has put several in the Sullivan and Bar A Sales with a \$3,000 steer by 4x4 ranking as her best effort thus far. She offers extra bone and body capacity and she'll deliver the goods with Upgrade!

BAR A CATTLE

Lot
36



Lot 36



Lot 37

Bar A 341

FEMALE Calved: Spring 2003

Sire: **ANGUS**
Dam: **ANGUS**

PE 12/20-2/24 to DSUL Smoke Signal and 2/24-3/15 to DSUL Upgrade – Due late November

This easy-fleshing Angus cow has raised several nice replacements. She is very reliable in production with extra milk and a problem-free track record. Count on her to deliver quality and style again this fall!

BAR A CATTLE

Lot
37



Lot 38

Bar A 775

FEMALE Calved: Fall 2007
 Sire: **OCC ANCHOR 482E** (Angus)
 Dam: **FULL FLUSH X FULLBACK** (Angus)

PE 12/20-2/24 to DSUL Smoke Signal – Due early November

This young female is very interesting and you can bank on her to be very productive. Her young dam has never missed, and her sire left Bar A with an excellent collection of easy-fleshing, perfect-uddered females. This one is predictably big ribbed and square with a sound, thick design and the ideal frame score to work with.

BAR A CATTLE

Lot
38

Bar A 7257

FEMALE Calved: Spring 2007
 Sire: **YELLOW JACKET**
 Dam: **DIRECT HIT X ANGUS**

PE 12/20-2/24 to DSUL Smoke Signal – Due late October

Another very young and exciting selection from the best end of the Bar A females, this impressive Yellow Jacket daughter is backed by one of the most consistent producers in the Bar A herd. This one is choke-necked and super-stout with a great hip and profile. Expect something sweet and silver from Smoke Signal!

BAR A CATTLE

Lot
39



Lot 39



Lot 40

Bar A 7227

FEMALE Calved: Spring 2007
 Sire: **HEAT WAVE**
 Dam: **MAINE ANJOU**

PE 12/20-2/24 to DSUL Smoke Signal – Due mid-November

This set of young females from Bar A is exciting and this one takes the prize for stoutness and eye appeal! Check the perfect hip in this well-balanced, sound Heat Wave daughter that will work wonders with Charolais and Charolais-cross bulls like this mating to Smoke Signal.

BAR A CATTLE

Lot
40

Bar A 715

FEMALE Calved: Fall 2007
 Sire: **HOO BEAR**
 Dam: **K-DONOR 415** (Meyer 734 x Angus)

PE 12/26-2/24 to DSUL Smoke Signal and 3/01-4/25 to Mojito – Due December

From the embryo program and the long-lasting source of success, K-Donor 415, this young female is a maternal sister to a string of Texas winners and several past sale features. She offers a flexible pedigree and a look that will make you believe in her potential to create something very special. We love her stout hip, long front and extra bone; she'll be a donor some day!

BAR A CATTLE

Lot
41



Lot 41

DSUL Hoo Doo Snowflake 76T

Reg. Charolais Cow EF1085991 Calved: 5/01/07 Horned

HOO DOO CROOK 9028
HOO DOO PRINCE 2019
 MS HOO DOO SAND BINGO Z8089
 HOO DOO 6094 GEORGE'S
MS HOO DOO GEORGIE Z9023
 HOO DOO ZK054

Lot
42

AI 11/21 to Jimmy the Greek – PE 11/25-1/30 to Hoo Bear – Safe to Jimmy the Greek – Due approx. 8/28

An excellent, purebred Hoo Doo Charolais from an embryo purchase, this youngster is a sister to a strong lineup of bulls that headlined our 2008 Genetic Progress Sale. This is an excellent combination with Jimmy The Greek as he is working very well on loose-made, long-fronted Charolais cows like this one. Smooth, rugged, and good!

SULLIVAN RANCH



Lot 42

DSUL Hoo Doo Lady 71T

Reg. Charolais Cow EF1085987 Calved: 4/24/07 Horned

HOO DOO CROOK 9028
HOO DOO PRINCE 2019
 MS HOO DOO SAND BINGO Z8089
 HOO DOO 1011
MISS HOO DOO Z6020
 HOO DOO ZK063

Lot
43

PE 11/25-1/30 to Hoo Bear – Due mid-September

A daughter of the famed Miss Hoo Doo Z6020, here is a rare find in purebred form! This long-bodied, large boned second-calver is sweet and problem-free. She'll work wonders with Hoo Bear and many other steer sires to produce those quick-selling smokeys!

SULLIVAN RANCH

DSUL 78

FEMALE Calved: Spring 2007

Sire: **TIDAL WAVE**
 Dam: **828 JESSICA** (Meyer 734 x AN)

Lot
44

PE 11/25-1/30 to Hoo Bear – Due approx. 10/07

From the embryo program and a direct daughter of the powerful Jessica 828 donor, this very young Tidal Wave will make excellent property for years to come. She is long and muscular with a balanced profile and the strength of two of our very best Meyer 734 donors in her pedigree.

SULLIVAN RANCH

Bar A 717

FEMALE Calved: Fall 2007

Sire: **LEAD ON** (Charolais)
 Dam: **BAR A 17T** (Meyer 734 x Angus)

Lot
45

PE 12/20-2/24 to DSUL Smoke Signal – Due late October

Another excellent daughter of the well-proven 17T female at Bar A, this very young cow offers exceptional bone and thickness on a correct, balanced frame. Her half-Charolais pedigree and proven dam will make her one to rely on and she'll deliver profit right away with a smoky prospect by Smoke Signal! See her sister that sells as Lot 19!

BAR A CATTLE



Lot 45

Bar A 787

FEMALE Calved: Fall 2007

Sire: **MONSOON**
 Dam: **BAR A 387** (Charolais)

Lot
46

PE 12/26-2/24 to DSUL Smoke Signal and 3/01-4/25 to Mojito – Due December

A great "sleeper" selection from this impressive offering of second-calvers, mark it down that this young cow will make an excellent buy. She did an excellent job with her first calf and her dam has been an exceptional producer with a \$9,200 son to her credit and one of the best replacements at Bar A this spring. This long-necked, big-boned Monsoon daughter will be a little green but she will produce.

BAR A CATTLE

Bar A G10

FEMALE Calved: Fall 2005

Sire: **POPEYE** (Charolais)
 Dam: **MAINE ANJOU**

Lot
47

PE 12/15-2/24 to DSUL Upgrade – Due late September

A choke-necked, huge-boned silver beauty with a lot to give, this youngster knows how to do her job. Her second calf sold as a show steer and she'll do it again with Upgrade. Pop-eye daughters are hard to find and this one is unique!

BAR A CATTLE



Lot 48

DSUL Jolette 15

FEMALE Calved: Spring 2001

Sire: **HEAT SEEKER**
 Dam: **45 ABNEY** (MA x AN)

PE 12/20-1/15 to Mojito and 1/15-2/24 to Splurge – Safe to Mojito – Due approx. mid-October

One of our best, this Heat Seeker daughter is small but mighty and she really delivers in the pasture. She is the dam of Kendra Elder's "Jewel" heifer by Hoo Doo Prince that won plenty in Texas including selections as the Reserve Supreme Female of the 2007 Heart of Texas, Reserve Division Champion at San Antonio in 2008, and Third Overall at San Antonio in 2009. With her good looks and extra substance she works with plenty of sires but this mating to Mojito holds considerable promise.

SULLIVAN RANCH

Lot
48



"Jewel" Hoo Doo Prince x Lot 48



Hoo Doo Prince x Lot 49



Shock N Awe x Lot 49

DSUL Les Girl 1

FEMALE Calved: Spring 2001

Sire: **NFL**
 Dam: **CAFFE 1398** (Angus)

AI 12/20 to Monopoly – PE 12/22-2/24 to Hoo Bear – Safe to Monopoly – Due approx. 9/28

A former top-seller for Les Caffee in the 2001 Wessington Springs sales, this NFL daughter has long been a favorite in the Sullivan and Bar A program due to her consistent performance and profit. She is smooth and solid with tremendous bone and muscle. A pair of daughters by Chill Factor and Shock N Awe have sold for a \$3,500 average. She is ready to win with Monopoly again this fall just like the \$1,700 steer she had this fall!

SULLIVAN RANCH

Lot
49

DSUL No Fear 970M

Reg. Maine Anjou Cow 317549 Calved: 9/18/02 Scurred

FJH BLACK ICE 100D
KGST FEAR THIS
 HALL'S MISS 420D
 THE WITCH DOCTOR

DSUL WITCH DR 970
 SM X AN 970

PE 11/25-1/30 to Hoo Bear – Due late October

A former winning show heifer for Kammi Walker, No Fear 970M is an excellent, high-Maine cow to work with. Like the judges said when she was winning shows, 970M is moderate and correct with extra depth of rib and plenty of power. She was Reserve Champion Maine-Anjou Female of the 2004 Houston Livestock Show and a Division Champion of the 2005 Ft. Worth Stock Show with a calf at her side. She looks great in production and has flushed well with an average of 10 good embryos on two flushes. The right kind!

Lot
50



Lot 50



Lot 50A - Frozen Embryos of DSUL No Fear 970M

Three embryos by Heat Wave

Available for pickup or shipping sale day – At least one pregnancy is guaranteed when terms are followed

SULLIVAN RANCH

Proven Donors & Bred Females

Bar A 5200

FEMALE Calved: Fall 2005
 Sire: **LIFELINE**
 Dam: **MA X AN**

AI 12/01 to Naughty Pine – PE 12/15-2/24 to DSUL Smoke Signal – Safe to Naughty Pine – Due approx. 9/09

Here is one that you need to see! This young Lifeline daughter is a real standout and one of the high-potential females in the Bar A lineup. She is very sound and easy on the eyes with extra muscle and a perfect hip to produce slick-shear prospects. Her last two calves have sold as show steers including an excellent son by Warrant that went to Oklahoma this spring.

BAR A CATTLE

Lot
51



Lot 51



Lot 52

Miss Lot to Love 146

FEMALE Calved: Fall 2001
 Sire: **LOTTO**
 Dam: **JB DOUBLE STUFF**

PE 12/15-1/15 to Mojito and 1/15-2/24 to Splurge – Safe to Mojito – Due approx. early October

A blue roan machine with a lot to give, this striking female is easy to love. She is cool and compact with a snake neck and fantastic bone and feet. She is the dam of a \$4,000 son by Jazz, a \$3,000 son by Hoo Doo Prince, and a \$5,500 son by Who Da Man that sold to Bonham Show Cattle, OK, and won plenty in the Shorthorn divisions in 2007.

SULLIVAN RANCH

Lot
52

GRTK Billy Joe 75L

Reg. Shorthorn Cow *x4041691 Calved: 4/09/01
 WF DILLON ET
SCC ESKIMO JOE G50
 SCC ROAN PLUS E64
 BR WINDSTAR ET
COOPS ROXSTAR
 JF ROXI

AI 12/19 to Heat Wave 5 – PE 12/22-1/15 to Mojito and 1/15-2/24 to DSUL Smoke Signal – Safe to Heat Wave 5 – Due approx. 9/27

This registered purebred Shorthorn by Eskimo Joe is as cool and thick as they get. She has worked well with Shorthorn and black sires with a number of calves in past Sullivan and Bar A Calf Sales. Her udder looks awful but she milks well. Safe to Heat Wave 5, this should be exciting!

SULLIVAN RANCH

Lot
53



Lot 53



Heat Wave x Lot 54

Miss GLMA 627M

Reg. 75% Maine Anjou Cow 309428 Calved: 4/20/02 Polled
 CKE PRIMETIME 74F
BK ICE PICK 472J
 PANNELL MISS 4072
 NAGE 57C
MISS 27F

Lot
54

AI 12/12 to Heat Wave 5 – PE 12/15-1/15 to Mojito and 1/15-2/24 to DSUL Smoke Signal – Safe to Heat Wave 5 – Due approx. 9/20

This is one seriously stout, high-Maine cow! She was the Sullivan Ranch selection from the Gayland Losing herd, SD, in 2002 and she puts her power into everything including the strong-selling heifer by Heat Wave shown here. One look is all it takes with this cow – slick neck, powerful middle, enormous bone – and her Heat Wave 5 baby will be all it takes this fall!

SULLIVAN RANCH



DCC Playmate 177

Reg. 50% Maine-Anjou Cow 289460 Calved: Spring 2001
 Sire: **MONSOON**
 Dam: **DCC 221H BY TYKIA 77M**

Lot
55

AI 12/19 to Monopoly – PE 12/22-1/15 to Mojito and 1/15-2/24 to Splurge – Safe to Monopoly – Due approx. 9/27

If you need a female to raise better slick-shear steer prospects, this is one to be sure to load. This Monsoon daughter from a dam by the proven sire, Tykia 77M, is as thick and wide as they get yet she still has a sleek front end and a great look. Her dam was a leader for DeRouche Cattle Company for several years with an old-line, outcross pedigree. Monopoly will do the job here!

SULLIVAN RANCH

Dux's Desiree 742G

Reg. Chiangus Cow 258886 Calved: 6/06/97

Polled

SKOOKUM OF GRASSY LANES 3P
RONAN SKOOKUM 124Y SMOKEM
 RONAN MATILDA 30R
 WINK POLL CORNHUSKER
SCHR SELENA
 AN X HH X SM

Lot
56

AI 11/21 to Grey Goose – PE 11/25-1/30 to Hoo Bear – Safe to Grey Goose – Due approx. 9/01

A well-proven source of success at Sullivan Ranch, this registered Smokem daughter makes the kind we like with consistency. She is the dam of a \$6,400 son by Heat Wave 1 plus a daughter by Who Da Man won everywhere for the Vorsand family in 2007 and 2008.

SULLIVAN RANCH



Who Da Man x Lot 56



DSUL Wave Girl 7211

FEMALE Calved: Spring 2007

Sire: **HEAT WAVE**
 Dam: **MCF COVER GIRL 211**

Lot
57

AI 11/21 to George – PE 11/25-1/30 to Hoo Bear – Safe to George – Due approx. 8/28

From the embryo program and backed by the ultra-powerful Cover Girl 211 donor, this big-backed, gray-baldy is a very interesting breeding piece. She was one of the best-haired replacements we kept in 2007 and her dam needs no introduction to those in search of power and winning quality. This mating to George should be excellent!

SULLIVAN RANCH

DSUL Covino 4515

FEMALE Calved: Spring 2004

Sire: **MOSSY OAK**
 Dam: **COVINO 515** (Covino III x Angus)

Sells open with a 2/15/10 heifer by DSUL Upgrade

A small and thick Mossy Oak daughter with a fancy heifer calf at-side by Upgrade! This cow is an ET daughter of the great Covino 515 donor and she passed on her muscle and style to her show heifer that sells here with her.

SULLIVAN RANCH

Lot
58

DSUL Midas 420

FEMALE Calved: Spring 2004

Sire: **MIDAS** (Hereford)
 Dam: **HEAT SEEKER 20**

Sells open with a 2/13/10 bull by DSUL Upgrade

This young Hereford-appearing cow will make an excellent buy. Our Midas daughters have been excellent and this one is the right size with good hair and bone and she milks well. Breed her to the right Hereford bull and the purple will find you!

SULLIVAN RANCH

Lot
59



Lot 58



Lot 59

EXCLUSIVE BRED HEIFERS...

DSUL/GF Annie 8664

FEMALE Calved: Spring 2008

Sire: **GOLDEN CHILD**

Dam: **GF 664** (Kadabra x HF)

AI 11/23 to Goose – PE 12/02-1/15 to Dr Sully (The Witch Doctor x Meyer 734 x Baretta 215) – Safe to Dr. Sully – Due approx. 9/18

A high-impact "Hereford" from the very best of our young females, Annie 911 is as good as it gets! If you've been searching for a physically-imposing donor to lead a new dimension in your program, she may well be the one for you. We have always been impressed by her stunning balance blended with powerful bone and excellent leg placement as well as her perfect chest, neck, and head. She has great hair quality and a gentle disposition; she'll be a cinch with many of the Hereford bulls available today. Own her before we change our mind about selling her!

SULLIVAN RANCH

Lot
60



Lot 60



Two Daughters of Chill 602G!



Miss Chill 602G

DSUL Kasey 602-7

FEMALE Calved: Spring 2008

Sire: **FULL FLUSH**

Dam: **MISS CHILL 602G** (Chill Factor x GK Angus 602)

AI 11/23 to Northern Improvement – PE 12/02-1/15 to Dr Sully (The Witch Doctor x Meyer 734 x Baretta 215) – Safe to Northern Improvement – Due approx. 9/01

A high-powered genetic package and the first of two valuable daughters of the Sullivan Ranch foundation donor, Miss Chill 602G, this bred heifer is a full sister to no less than 7 elite donors in production for leading outfits across the country. The 602 family remains as one of the most valuable and proven lines in the business and has recorded more champion progeny than any other we can think of. This heifer has not had the benefit of a "show barn" life but she has the same remarkable balance, muscle, and lines as her famous sisters whose recent accomplishments include top-sellers in the Texas Panhandle this spring and the production of the Grand Champion Steer of the 2009 Oklahoma Youth Expo that was raised at Sullivan Ranch and Bar A. This family and this pedigree works every time, you can bank on it!

SULLIVAN RANCH

Lot
61A

DSUL Savannah 602-2

FEMALE Calved: Spring 2008

Sire: **HEAT WAVE**

Dam: **MISS CHILL 602G** (Chill Factor x GK Angus 602)

AI 11/23 to Northern Improvement – PE 12/02-1/15 to Dr Sully (The Witch Doctor x Meyer 734 x Baretta 215) – Safe to Northern Improvement – Due approx. 8/28

With a neck and build like only momma can make, this bred heifer is another certain quantity from the great 602G that now records more than \$400,000 in direct progeny sales. This heifer stands out in a crowd due to her uncommon balance and elegant profile and she is as rugged as any. She'll make an ideal show calf producer for years to come and is a full sister to several favorites including Dustin Nelson's winning market heifer this year. Safe to Northern Improvement, she'll deliver a prospect much like the Lot 3 bull that sells here.

SULLIVAN RANCH

Lot
61B



Lot 61B



Nadine 9644

Two Daughters of Nadine 9644!
DSUL Made Right 9644-1

FEMALE Calved: Fall 2009

Sire: **MADE RIGHT**
 Dam: **NADINE 9644** (Tazz x HF)

AI 11/21 to Northern Improvement – PE 12/02-1/15 to Dr Sully (The Witch Doctor x Meyer 734 x Baretta 215) – Safe to Northern Improvement – Due approx. 8/28

Nadine 9644 has been an awesome female in our Hereford production program and this is an excellent pair of daughters that will lead any program into profit. This one is by the limited and proven sire of champions, Made Right, and she is going to be great property. She is one of the youngest bred heifers in the offering but she is also one of the thickest and best designed; expect much from her as she matures. Her brothers have been customer favorites and a sister, DSUL Natasha 5964, was a \$25,000-valued feature of our fourth Genetic Progress Sale and is owned with Boysel Genetics, OH. Power in the blood!

SULLIVAN RANCH

Lot
62A



Lot 62B

DSUL Penny 9644-2

FEMALE Calved: Fall 2009

Sire: **ACE/WILLIE**
 Dam: **NADINE 9644** (Tazz x HF)

AI 11/21 to Northern Improvement – PE 12/02-1/15 to Dr Sully (The Witch Doctor x Meyer 734 x Baretta 215) – Safe to Northern Improvement – Due approx. 8/28

Another excellent "Hereford" bred heifer from the ultra-consistent Nadine 9644, this Ace daughter shows excellent breed character blended with a smooth, correct pattern. Her dam has been a mainstay in our Hereford steer program with a string of \$4-6,000 sons to her credit as well as the \$25,000-valued DSUL Natasha 5964 that is now owned with Boysel Genetics, OH.

SULLIVAN RANCH

Lot
62B



Lot 63

DSUL Hoo Kate 491

FEMALE Calved: Spring 2008

Sire: **HOO TOO**
 Dam: **DSUL KATIE 491K** (Cookie Monster x Heartthrob)

AI 11/21 to Ali 2 – PE 12/02-1/15 to Dr Sully (The Witch Doctor x Meyer 734 x Baretta 215) – Safe to Ali 2 – Due approx. 8/28

A daughter of our former Houston Champion and leading Limousin donor, DSUL Kate 491K, this heifer is a maternal sister to James Sullivan's Fourth Overall Steer of the 2008 Iowa State Fair and Charlie Wilson's Reserve Grand Champion Steer of the World Beef Expo plus the Vince Elder family's Supreme Champion Female of the 2008 Winter Buckle Classic and Reserve Grand Champion Chi Female of the 2009 San Antonio Livestock Show. This blonde heifer is big ribbed and very powerful and safe to Ali 2!

SULLIVAN RANCH

Lot
63



DSUL Kate 491K



DSUL 250 Meyer 339

FEMALE Calved: Spring 2008

Sire: **DSUL MEYER 250**
 Dam: **NE 339** (Angus)

PE 12/02-1/15 to Dr Sully (The Witch Doctor x Meyer 734 x Baretta 215) – Due approx. 9/19

We do not have as many of our Nebraska quarter-bloods to offer this year but the quality in this pair of bred heifers is excellent. This one is sired by a son of Meyer 734 from our well-proven 250 Donor that also produced two of our most valuable young donors. This heifer is predictably deep and smooth with plenty of muscle. She is bred to Dr. Sully that also sells in this sale.

SULLIVAN RANCH

Lot
64

DSUL 602 Meyer 050

FEMALE Calved: Spring 2008

Sire: **DSUL MEYER 602**
 Dam: **NE 050** (SH x AN)

AI 11/22 to Total Solution – PE 12/02-1/15 to Dr Sully (The Witch Doctor x Meyer 734 x Baretta 215) – Safe to Dr. Sully – Due approx. 9/19

Over the years these "Nebraska Quarter-Bloods" have become customer favorites due to their consistent quality and inherent flexibility at breeding time. This heifer is by a Meyer 734 son of our leading donor, Chill 602G. She is extra-stout ribbed and bodied with a great rear leg and plenty of feminine shape.

SULLIVAN RANCH

Lot
65

Bar A 833

FEMALE Calved: Spring 2008

Sire: **HOO TOO**
 Dam: **BAR A 33T** (Meyer 734 x Angus)

PE 11/20-2/24 to RSKY Legend (Angus) – Due early September

A sweet-profiling daughter of Hoo Too and a great Meyer 734 female that is a leader at Bar A. This heifer is long and smooth with an excellent hip and leg design. Her maternal brother by Tidal Wave sold for \$3,400 in the 2007 Sullivan and Bar A Show Calf Sale.

BAR A CATTLE

Lot
66



Lot 66

DSUL Cortney B-16

FEMALE Calved: Spring 2008

Sire: **WHITE WARRIOR** (Char)
 Dam: **DSUL B-16** (MA x AN)

AI 11/21 to Ali 2 – PE 12/02-1/15 to Dr Sully (The Witch Doctor x Meyer 734 x Bareta 215) – Safe to Ali 2 – Due approx. 8/28

Our White Warrior daughters are moderate-framed, easy-fleshing cows with muscle, and this daughter is a great example of the quality you can expect. Safe to Ali 2, this heifer is very wide and thick with a cool design and leading performance. She'll make a low-maintenance cow that can be easily mated to many of today's hottest steer bulls.

SULLIVAN RANCH

Lot
67

DSUL Sierra J950

FEMALE Calved: Spring 2008

Sire: **WHITE WARRIOR** (Char)
 Dam: **DSUL J970** (MA x AN)

PE 12/02-1/15 to Dr Sully (The Witch Doctor x Meyer 734 x Bareta 215) – Due mid-September

Our White Warrior daughters are making excellent cows, and this is another thick one with a moderate frame score and a very flexible pedigree.

SULLIVAN RANCH

Lot
68

Bar A 846

FEMALE Calved: Spring 2008

Sire: **TIDAL WAVE**
 Dam: **MAINE ANJOU**

PE 11/20-2/24 to RSKY Legend (Angus) – Due early September

A brockle-faced Tidal Wave daughter with massive bone and thickness, this moderate-framed heifer is extra stout and big ribbed. She is bred to RSKY Legend, the Bar A choice of the 2008 Rosanky Sale that is a deep, thick, clean-made son of OCC Legend with outstanding calving-ease and several replacements and show steers in his first crop.

BAR A CATTLE

Lot
69

Bar A 843

FEMALE Calved: Fall 2008

Sire: **Q DOG**
 Dam: **BAR A 11T** (Meyer 734 x Angus)

PE 11/20-2/24 to RSKY Legend (Angus) – Due early September

If you need them thick, hairy, and big boned then be sure to mark this one and load her sale day. She is another daughter of a very predictable Bar A female by Meyer 734. Her dam has put three steers in past calf sales and she milks exceptionally well. This one is deep bodied and very heavy structured!

BAR A CATTLE

Lot
70

Absentee Bidding Available Via The World Wide Web!!!

Available to potential buyers with high-speed internet access. Log-in at www.liveauctions.tv to create your bidding account.



Sale Day Internet Bidding Contact:
 Gary Holub, 830/221-5550

Internet buyers are responsible for all updates and announcements. Please consult the sale update sheet prior to the auction.



DSUL Abigail 4151

FEMALE Calved: Fall 2009
 Sire: **DSUL UP GRADE**
 Dam: **DSUL ABIGAIL 4151** (Hannibal x Donor 151 by Meyer 734)

Lot
71

Sells open

Fantastic potential from the \$22,500 DSUL Abigail 4151! This is the first Up Grade calf from Abigail 4151 that was a Tulsa State Fair Champion herself and the results are impressive. This heifer offers extreme stoutness and style with a profile that is so cool that she could only get it from her mother and grand-mother that have both been successful donors on the ranch. Maternal brothers to this heifer include a pair of steers at \$7,500 and \$5,500. This one will carry the family torch of winning quality!

SULLIVAN RANCH

DSUL Madison 345

FEMALE Calved: Fall 2009
 Sire: **WHITE WARRIOR**
 Dam: **MADISON 236** (NFL x Went AN)

Lot
72

Sells open

Just what we wanted from our great Madison 236 donor, a great, half-blood Charolais heifer calf! This young heifer is great property that will appreciate for years to come. Her dam is a customer favorite that has produced a number of successes for us like a pair of daughters by Hot Rod in our 2007 sale that brought \$7,500 each to Blair Kelly, TX, and nine more sons and daughters that have brought in a \$3,850 average including a red daughter by Lifeline that was a multiple-winning show heifer for Jeff Wehe, TX. This heifer is high-performing, very big boned, and feminine in every way. What a cow she'll be!

SULLIVAN RANCH SEE LOT 204 FOR MORE FROM DONOR 236



Bar A 9323

FEMALE Calved: Fall 2009
 Sire: **JIMMY THE GREEK**
 Dam: **BAR A V323** (Hoo Doo Charolais)

Lot
73

A special selection from the very top of the Bar A replacement heifers, this heifer is as stout as they come with an enormous hip and as much rib as you can put in one. Her dam ranks as one of the very top Hoo Doo females at Bar A!

BAR A CATTLE

DSUL Tamara S83

FEMALE Calved: Fall 2009
 Sire: **CHUNKY MONKEY**
 Dam: **DSUL MISS WHO 33** (Take Charge x LSC Miss Glory 411C)
Sells open

A massive, powerful cow prospect by the great Chunky Monkey and out of Miss Who 33/89, a full sister to Who Made Who that was produced from a Frozen Gold embryo purchase and sold for \$10,500 in our 2008 female sale to Murray Farms, OH. Chunky Monkey and Miss Who 33/89 have hooked up with great success over the past two years including a trio of steer prospects in the 2008 Sullivan and Bar A Sale that sold for \$16,500, \$7,800, and \$4,300, a \$8,000 heifer in the 2008 Genetic Progress Sale, and more leading progeny from Ohio to Texas. Great property here!

SULLIVAN RANCH

Lot
74



Lot 74



DSUL Miss Who 33/89



Lot 75



DSUL Tidal Wave

DSUL Lexus S81

FEMALE Calved: Fall 2009
 Sire: **HEAT WAVE**
 Dam: **DSUL LEXUS 904** (Meyer 734 x Angus)
Sells open

A full sister to DSUL Tidal Wave and DSUL Hotel California and a maternal sister to the \$18,000-valued DSUL Sheza Lady 4904! We sold the dam of this heifer – a cow that produced so many top-sellers for us – as a feature of our 2009 Power In the Blood Sale to Raymond Doreck, TX, and she will certainly be missed because of calves like this one. This heifer looks good slick due to her excellent balance and thickness blended with the signature mass and look that her dam is known for.

SULLIVAN RANCH

Lot
75



Lot 76



Gabriella 5G1-1

DSUL Cadence S09

FEMALE Calved: Fall 2009
 Sire: **HEAT WAVE**
 Dam: **GABRIELLA 5G1-1** (Thomas Outlaw x GK G-1)
Sells open

A full sister to a \$12,000 favorite steer from our 2009 calf crop, this impressive heifer is one to watch for in this exciting lineup of fall heifer calves. Her dam is owned with Mimms Cattle, TX, and is an especially powerful daughter of the famed and now-deceased G-1 donor that produced a string of AI sires, winning steers, and high-revenue donor females like the dam of the 2009 Iowa Beef Expo Reserve Champion Steer, among many others. This heifer can be a very competitive show heifer as she is very long and thick with excellent structure and size.

SULLIVAN RANCH SEE LOT 206 FOR MORE FROM DONOR 5G1-1

Lot
76

Bar A 933

FEMALE Calved: Fall 2009
 Sire: **HEAT WAVE**
 Dam: **DSUL SASHA L37** (Charolais)

A sound, attractive female out of the ultra-powerful L37 donor cow at Sullivan Ranch. This young heifer will show well and make great property for years to come!

BAR A CATTLE

Lot
77

DSUL Victoria 39

FEMALE Calved: Fall 2009
 Sire: **DSUL SMOKE SIGNAL**
 Dam: **DSUL 39** (MA x AN)

Sells open
Show time! This solid-black Smoke Signal daughter is big, long, and very feminine with a show ring look. She is a favorite of many!

SULLIVAN RANCH

Lot
78



Lot 78



Lot 79

DSUL Annie Girl 421

FEMALE Calved: Fall 2009
 Sire: **HEAT WAVE**
 Dam: **ANNIE 037** (Who Made Who x SM x AN)

Sells open

A full sister to the 2007 Oklahoma State Fair Grand Champion Prospect Steer and the 2007 Tulsa State Fair Reserve Grand Champion Steer, this heifer needs a halter because she will certainly turn some heads! She looks as good peeled as she did with her hair and she keeps getting better. Her donor dam has been doing a wonderful job for us and this heifer looks like the next winner from this family!

SULLIVAN RANCH SEE LOT 200 FOR MORE FROM DONOR 037

Lot
79



DSUL Red Tank Rose 435

FEMALE Calved: Fall 2009
 Sire: **HEAT WAVE**
 Dam: **DSUL SHEZA TANK 116** (Meyer 734 x DSUL Tank 16B)

Sells open

From the embryo program and the now-proven Sheza Tank 116 donor whose first son by DSUL Up Grade sold for \$5,500 this spring, this massive, totally sound heifer is the product of two generations of Sullivan Ranch donors and the same family that produced the popular and successful AI sire, Friction. This red blaze-faced heifer is going to make a wonderful cow with her giant rib cage, leading shape and power, and deep cow family.

Lot 80A - Frozen Embryos of DSUL Sheza Tank 116
 Three embryos by Smilin' Bob

Lot 80B - Frozen Embryos of DSUL Sheza Tank 116
 Three embryos by Mojito

Available for pickup or shipping sale day – At least one pregnancy is guaranteed when terms are followed

SULLIVAN RANCH

Lot
80



Lot 80



DSUL Sheza Tank 116



Red Sasha L37

DSUL Sasha S99

FEMALE Calved: Fall 2009
 Sire: **HEAT WAVE**
 Dam: **OCR RED SASHA L37** (Red Sash x Miss Mac H02)

Sells open

An embryo daughter of the ultra-powerful Red Sasha L37 donor, this young female brings a lot of power in her own right. She is powerfully constructed from her large feet and bone to her immense rib cage and wide top. She has the same type of deep flank and smooth, powerful movement as her mother whose first ET crop includes a Firewater daughter that has been very successful for Nick Hansen, NE.

SULLIVAN RANCH

Lot
81

Two Daughters of Vanessa 240!

DSUL Tina S110

FEMALE Calved: Fall 2009

Sire: **HEAT WAVE**

Dam: **VANESSA 240** (Heat Seeker x Char)

Sells open

A fancy show and donor prospect from the THF donor, Vanessa 240! This fall heifer is ready to rock with extra size, length, and a very impressive, clean design. Her full sister sells here as well and both are excellent. A maternal sister by Lifeline was a \$7,800 feature of our 2009 Power In the Blood Pasture Sale as we're getting nothing but quality from Vanessa 240!

SULLIVAN RANCH

Lot
82A



Lot 82A

DSUL Tyra S93

FEMALE Calved: Fall 2009

Sire: **HEAT WAVE**

Dam: **VANESSA 240** (Heat Seeker x Char)

Sells open

The younger full sister to Lot 82A, this Char-cross heifer is just right for steer production with her good color, abundant muscle, and correct, loose design.

SULLIVAN RANCH

SEE LOT 208 FOR MORE FROM DONOR 240

Lot
82B



Vanessa 240



Lot 83

DSUL Trisa S90

FEMALE Calved: Fall 2009

Sire: **HEAT WAVE**

Dam: **DSUL FRECKLES 23C** (Limousin x Sim x An)

Sells open

Foundation genetics from the amazing Freckles 23C donor that just keeps churning out quality, even at 18 years of age. This young heifer is a maternal sister to so many past Sullivan Ranch favorites and major winners, and some of her sisters have made very successful donors as well. You'll love the muscle and long front in this heifer but you'll love her more once you get her in production.

SULLIVAN RANCH

SEE LOT 211 FOR MORE FROM DONOR 23C

Lot
83



DSUL Freckles 23C

DSUL Jordan 4602

FEMALE Calved: Fall 2009

Sire: **DSUL UP GRADE**

Dam: **DSUL JORDAN 4602** (Full Throttle x Miss Chill 602G)

Sells open

A product of the time-tested and show ring approved 602 family, this very young heifer is one to watch for in the open heifer division. She is the youngest heifer in the sale but she has the cool, correct design and excellent balance that her family is known to produce. Her donor dam is Jordan 4602, the very powerful daughter of Full Throttle and the legendary Miss Chill 602G!

SULLIVAN RANCH

Lot
84



DSUL Jordan 4602

THE 2010 CONFIRMED PREGNANCY SALE

An Exclusive Selection of 24 Planned Matings From Our Best Donors!

All recipients available for viewing and load-out sale day.

Also Selling Selected Frozen Embryo Lots from Several Donors!

In all cases, no less than one 90-day pregnancy per embryo lot is guaranteed when terms are followed.



Lot 200:

Donor: DSUL Annie 037 (Who Made Who x Meyer 734)

>>> A full sibling to the 2007 Tulsa State Fair Reserve Grand Champion Steer and the 2007 Oklahoma State Fair Champion Prospect Steer.

Lot 200 – Confirmed, Unsexed Pregnancy by Heat Wave due 09/01

Recipient Tag 4328

Lot 201:

Donor: Miss Chill 602-3 (Chill Factor x Angus 602)

>>> Miss Chill 602-3 is a clone to Miss Chill 602G.

Lot 201 – Confirmed, Unsexed Pregnancy by Friction due 09/04

Recipient Tag 5801



Miss Chill 602G

Lot 202:

Donor: DSUL Haley 5602 (Full Flush x Miss Chill 602G)

>>> Three calves produced by this mating so far have sold for \$14,600, \$12,000 and \$4,800.

Lot 202 – Confirmed, Unsexed Pregnancy by Heat Wave due 09/30

Recipient Tag 230



DSUL Haley 5602

Lot 203:

Donor: DSUL Isabella 260 (Full Flush x Miss Chill 602G)

>>> A full sibling in-blood to the 2009 Oklahoma Youth Expo Grand Champion Steer plus more calves in the \$4-10,000 range the last three years.

Lot 203 – Confirmed, Unsexed Pregnancy by Wave On Wave due 09/16

Recipient Tag 12



Lot 204:

Donor: WB Madison 236 (NFL x Angus)

>>> See Lot 72 in this catalog for more information.

Lot 204A – Confirmed, Unsexed Pregnancy by Heat Wave due 09/01

Recipient Tag T696

Lot 204B – Confirmed, Unsexed Pregnancy by White Warrior due 09/01

Recipient Tag 3882

Lot 204C – Confirmed, Unsexed Pregnancy by White Warrior due 09/01

Recipient Tag 9583



WB Madison 236

Lot 205:

Donor: Maggie 1 (PB Charolais)

>>> 787G x High Lite – A new donor and past champion whose only calf by Heat Wave sold for \$3,800. There will be more!

Lot 205A – Confirmed, Unsexed Pregnancy by Heat Wave due 09/01
Recipient Tag 5546

Lot 205B – Confirmed, Unsexed Pregnancy by Heat Wave due 09/01
Recipient Tag 5820

Lot 205C – Confirmed, Unsexed Pregnancy by Heat Wave due 09/01
Recipient Tag E915

Lot 205D – Confirmed, Unsexed Pregnancy by Heat Wave due 09/01
Recipient Tag P712

Lot 205E – Confirmed, Unsexed Pregnancy by Heat Wave due 09/01
Recipient Tag X725



>> Frozen Embryos from Maggie 1

Lot 205F – Three embryos by Heat Wave

Available for shipping sale day – At least one pregnancy is guaranteed when terms are followed

Lot 206:

Donor: Gabriella 5G1-1 (Thomas Outlaw x GK Donor G-1)

>>> See Lot 76 in this catalog for more information. All three of these pregnancies will create full siblings to a \$12,000 steer from our 2010 Sullivan and Bar A Calf Sale.

Lot 206A – Confirmed, Unsexed Pregnancy by Heat Wave 1 due 09/01
Recipient Tag 4318

Lot 206B – Confirmed, Unsexed Pregnancy by Heat Wave 1 due 09/01
Recipient Tag N126

Lot 206C – Confirmed, Unsexed Pregnancy by Heat Wave 1 due 09/01
Recipient Tag T762



Lot 207:

Donor: Kendall 22 (Heat Seeker x Sullivan's 6651)

>>> See Lot 1 in this catalog for more information.

Lot 207 – Confirmed, Unsexed Pregnancy by Hannibal due 09/04
Recipient Tag 322



Lot 208:

Donor: Vanessa 240 (Heat Seeker x Char) - THF

>>> See Lot 82 in this catalog for more information. The donor is THF.

Lot 208A – Confirmed, Unsexed Pregnancy by Heat Wave 1 due 09/04
Recipient Tag 9596

Lot 208B – Confirmed, Unsexed Pregnancy by Heat Wave 1 due 09/05
Recipient Tag 7480

>> Frozen Embryos from Vanessa 240

Lot 208C – Three embryos by Heat Wave

Lot 208D – Three embryos by Heat Wave

Available for shipping sale day – At least one pregnancy is guaranteed when terms are followed





Lot 209:
Donor: DSUL Maria 28D (Limousin by Pollflection)

>>> See Lot 18 in this catalog for more information.

Lot 209A – Confirmed, Unsexed Pregnancy by Heat Wave due 09/04
Recipient Tag 4200

Lot 209B – Confirmed, Unsexed Pregnancy by Heat Wave due 09/04
Recipient Tag 8083

Lot 210:
Donor: K- Meyer 415 (Meyer 734 x Angus)

>>> A foundation donor for Sullivan Ranch. The dam of numerous winners in several breeds in Texas.

Lot 210A – Confirmed, Unsexed Pregnancy by George due 09/04
Recipient Tag 3569

>> Frozen Embryos from K- Meyer 415

Lot 210B – Three embryos by George

Lot 210C – Three embryos by Power Trip

Available for shipping sale day – At least one pregnancy is guaranteed when terms are followed



K- Meyer 415

Lot 211:
Donor: DSUL Freckles 23C (Limousin x Sim/An)

>>> See Lot 83 in this catalog for more information.

Lot 211A – Confirmed, Unsexed Pregnancy by Heat Wave due 09/16
Recipient Tag 345

>> Frozen Embryos from DSUL Freckles 23C

Lot 211B – Three embryos by Heat Wave

Available for shipping sale day – At least one pregnancy is guaranteed when terms are followed



DSUL Freckles 23C

Lot 212:
Donor: Sadie Grace 4634 (Meyer 734 x ACF Sadie by Foreplay)

>>> A full sibling to the top progeny group from our 2009 spring crop including two calves over \$15,000.
This is the first pregnancy to sell from this donor.

Lot 212 – Confirmed, Unsexed Pregnancy by Heat Wave due 10/13
Recipient Tag 8420



DSUL Sadie Grace 4634

THE 2010 SULLIVAN SUPPLY SOUTH SHOW SUPPLY AND EQUIPMENT AUCTION

Show Equipment (*partial listing*)

- 2 – 24" Sullivan Turbo Fans
- 2 – Used Air Express Blowers
- 4 – Used Livestock Blowers
- 1 – 7' Cadillac Steel Chute
- 5 – New 4-wing Turbo Fan Blades
 - 1 – Steel Stall Divider
- 3 – Used Oster Clipmaster Clippers
 - 2 – Used Andis 2-speed Clippers
- 8 dozen – Pink & Black Rope Halters
- 8 dozen – Black & Pink Rope Halters
- Other various items too many to list.

Ranch Equipment:

- 1 – New Stronghold Palpation Cage

*Condition will range from
new to freight damaged.*

For more information concerning the show
equipment auction call Vince Elder or Mistie Ellis
at Sullivan Supply South prior to the auction.

Phone: 254-582-7096

Sullivan Ranch and Bar A Cattle present

GENETIC PROGRESS

Saturday, June 12
West, Texas

Sale VI

BRED COWS & HEIFERS - HERD SIRES
OPEN REPLACEMENTS - FROZEN EMBRYOS



Craig M. Reiter & Assoc.
P.O. Box 85
Elmore, Ohio U.S.A. 43416
www.primetimeagrimarketing.com

First Class Mail
U.S. Postage
PAID

First Class Mail — Do Not Delay

